

# NORTH IOWA RIVER GREENBELT

## POINTS OF INTEREST:

The North Iowa Greenbelt, a scenic drive which follows the Iowa River as it winds its way through the eastern part of Wright County and continues into Franklin County, is a definite sight to see. Signs along the way guide the traveler, as the route follows both hard-surface and gravel roads for almost fifty miles. Highlighted on the scenic drive are the natural and historical resources of the area.

As you travel from north to south, among the many wildlife and natural areas are the Sullivan Wildlife Habitat area, the Finn Prairie Preserve, Morse Lake, Rolling Acres Potholes, Lake Cornelia, a native dry gravel prairie, Pikes Timber, the Prairie Smoke Wildlife Area, Horse Grove, Bingham Park, the Stagecoach Trail Prairie, and the remnants of glacial activity that make up the geological formation of the Altamont Moraine. Many historical sites are along the drive. For map and route information, contact Wright County Conservation at 515-532-3185.



## CONTACTS FOR MORE INFORMATION

Wright County Economic Development  
515-532-6422  
www.wrightcounty.org

Belmond Area Chamber of Commerce  
641-444-3937  
www.belmond.com

Clarion Partnership for Growth  
(Chamber & Development)  
515-532-2256  
www.clarion-iowa.com

Dows Welcome Center  
515-852-3595  
www.dowsiowa.com

Eagle Grove Chamber of Commerce  
515-448-4821  
www.eaglegrove.com

Silos and Smokestacks  
www.silosandsmokestacks.org

Wright County  
Charitable Foundation



Printed by Allen Printing & Publishing Co. Inc. Clarion, IA USA - 2008

# DISCOVER THE WRIGHT DIRECTION through WRIGHT COUNTY, IOWA!



Beautiful biking trails \* museums \*  
hiking trails \* water recreation \*  
snowmobile trails \* hunting \*  
scenic motorcycle routes \*  
camping \* barn quilts \*  
comfortable accommodations

## GOLDFIELD

### POINTS OF INTEREST:

The oldest town in Wright County, Goldfield is nicknamed "Fountain City" because of its many flowing wells. Camp-fire Girls and their dads built a gazebo over a well at North Main Street and Cedar Street. It offers a relaxing stop and drink of water, as does the flowing well in Fountain City Riverside Park. The annual Fountain City Day is celebrated with a parade, games, food, and program are designed for maximum enjoyment by visitors from near and far. For more information, call 515-825-3613.

The Old Settlers Cabin, located on Main Street, is a one room cabin that was built to specifications of early settlers by Goldfield Boy Scouts. Call 515-825-3613 to view the cabin by appointment.



The Keyhole Bridge, located over Buttermilk Creek, is named so for its design that resembles an old keyhole. Over 100 years old, this bridge carries a railway that is still in use today. In the past, this railway carried certain passengers, known as "hobos", who would get on or off at this location. Located on private property, this bridge is in an area known as "Hobo Jungle", where the hobos would bathe and do laundry in the creek and use the tree coverage for protection from the elements. If they needed money, the local Goldfield residents would give them odd jobs for the short times they were in town.



## WOOLSTOCK

### POINTS OF INTEREST:

The French Church, which is 3 1/2 miles east of Woolstock on C-70, is a historic landmark in southwest Wright County. French settlers arrived here by covered wagon



from the Alsace-Lorraine region of France. The Ban de La Roche Reunion Service is held at the church annually on the first Sunday of August. The church displays a wreath brought to the United States in 1989 from the French region, which shows the red, white, and blue colors of Woolstock's sister city. Citizens enjoy an ice cream social in the community hall after the church services. Call 515-839-5624 for an appointment.

George (Brewer) Reeves, the actor best known for his TV portrayal of Superman beginning in 1950, was born in Woolstock in 1914.



## LAKE CORNELIA

### POINTS OF INTEREST:

Lake Cornelia is a 243 acre natural glacial lake that offers swimming boating, skiing, and fishing, as well as a 70 unit camping facility. Lake Cornelia Park provides electricity, water, showers, modern and pit latrines, a boat ramp, a quiet water boat entry, picnicking facility, and a new playground. It is patrolled by a Park Ranger. WinterFest is a family fun day held annually on the first Saturday in February. Horse drawn sleigh rides, dog sled rides, ice skating, and snowshoeing are just some of the activities



## ROWAN / GALT

### POINTS OF INTEREST:

The Rowan Community Center, formerly the school gymnasium, has a large kitchen and will seat approximately 150 people. The Community



Center also serves as the home of the Iowa River Player community theatre group. For performance dates and tickets, call 641-853-2398.

The Pickle Factory in Galt helped farmers earn money during the Great Depression. However, the factory was dismantled in the early 1940's. Even though Galt is a small town, it still maintains a post office and a Mayor / City Council form of government. The railroad played big part in the early history of Galt, and the present track are part of the spur leading to Dows.

# CLARION

## POINTS OF INTEREST:

**The Rock Island Railroad Depot**, a beautifully restored building at 302 S. Main Street, served for many years as Rock Island's train depot. The building celebrated its centennial in 1998. The depot also serves as the Chamber of Commerce and Development Commission's offices. Call 515-532-2256 for more information.



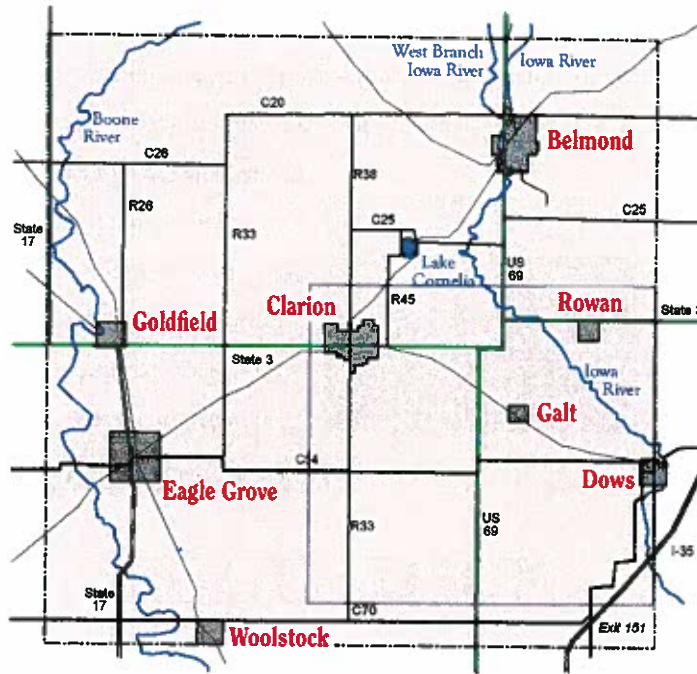
**The 4-H Schoolhouse Museum** is the original one-room schoolhouse where O. H. Benson got the idea to use the four leaf clover as the national 4-H emblem. Open hours in June, July, and August or by appointment. Call 515-532-2256 for more information.



**The Heartland Museum** houses over 16,000 sq. ft. of restored and original tractors, machinery, and signs, over 2,000 toys and models, a large collection of wagons, buggies, and



sleighs, artist teddy bears, and much more. The museum is also home to Alvina's Hat Parlor and Millinery shop. Alvina was Clarion's "Iowa Hat Lady", with more than 6,000 hats in her collection. The Wright County Historical Library is located on the 1920's—1930's streetscapes within the museum. History of the county, its towns, schools, and more can be found there. A 6 ft. wooden map displays points of interest throughout the years. Call 515-602-6000 for more details or to set up a time for a visit.



# EAGLE GROVE

## POINTS OF INTEREST:

**The Eagle Grove Historical Museum**, located at 401 W. Broadway, is the formerly known Andrew Carnegie Library. Built in 1903 through a grant from the Andrew Carnegie Foundation, it was placed on the National Register of Historic Places in 1977. Today it houses artifacts and historical items from the early days of Eagle Grove. Open Saturday and Sunday from Memorial Day to Labor Day from 1pm—3pm or by appointment. Call Eagle Pharmacy at 515-448-3814 for more information.



**The Wright County District Junior Fair** has been held every year since 1927 at the Wright County Fairgrounds, located at 901 SE 1st St. The fair has always been "free gate" and features a superior 4-H and FFA livestock show and sale, exhibits, along with live entertainment, a midway, and exhibitors. Contact 515-448-3351 for more details.

**The Explosion Memorial Plaque** at 200 West Broadway commemorates the deadly explosion of February 2, 1973 which claimed 14 lives and caused hundreds

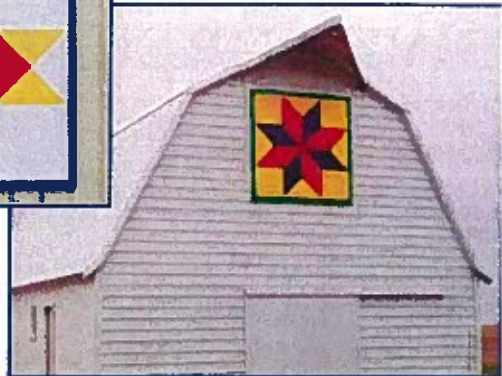
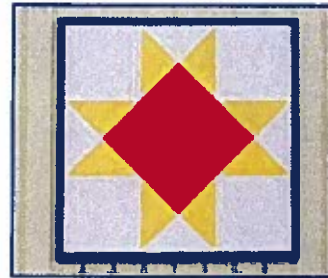
of thousands of dollars in property damage.



# WRIGHT COUNTY

## QUILT BLOCK TOUR:

While visiting Wright County, pick up a driving tour map from the Dows Welcome Center or one of the Chamber of Commerce offices and take in the Underground Railroad Quilt Block Tour. Learn the importance each block was to runaway slaves as they made their way North to freedom, and watch for other beautiful quilt blocks as you tour the countryside.



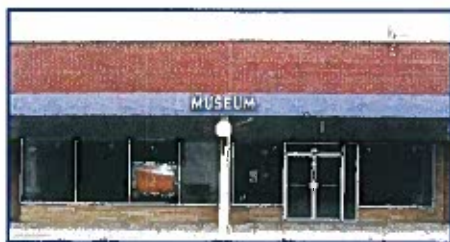
# BELMOND

## POINTS OF INTEREST:

**The Jenison—Meacham Memorial Art Center**, located at 1775 Taylor Ave, is home to art exhibits, murals, and artifacts depicting life of area pioneers. The restored 1900s farmstead includes a house, barn, vintage schoolhouse, two large machine sheds full of restored antique farm machinery, and a restored crab sawmill. Weekly tours of original art exhibits run through the summer. Call 641-444-4721 or 641-444-4635.



**The Belmond Historical Museum** is open the 2nd and 4th Sundays of the month during the summer and by appointment. Here you will encounter the preserved history of Belmond with many artifacts and items that have been gifted by Belmond residents. Call 641-444-4111 for information.



**The Santa House Park** is located at 340 E. Main St. This newly constructed permanent Santa House is available for non-profit usage. Call 641-444-3937.

# DOWS

## POINTS OF INTEREST:

**The Rock Island Depot Welcome Center** is owned and operated by the Dows Historical Society. Now an official Iowa State welcome center, it houses exhibits of railroad and other 19th century memorabilia. Open 9am-5pm weekdays, Noon-5pm on Sundays. Call 515-852-3595 for more information.



**The Quasdorf Wagon, Blacksmith, and Machine Shop Museum** is a two-story "hands-on" experience of the early American Iowa agricultural industrial era. Tools, machines, and methods can be observed and handled here. Located on West Train Street in Dows, call 515-852-3595 for more details.



**The Dows Mercantile Fillmore Building Store**, located at 122 E. Ellsworth, is a two-sided gift shop and antique store with a basement and balcony. Be sure to enjoy coffee, tea, cider, cookies, rolls, pie, or soup and sandwich in the Crème-De-La-Crème Ice Cream Shop. Open 9am-4:30pm weekdays, 1pm-4:30pm on Sundays. Call 515-852-3533.

**The Vernon Township Schoolhouse** dates from 1880 and has an outhouse. Call 515-852-3595, by appointment only.

